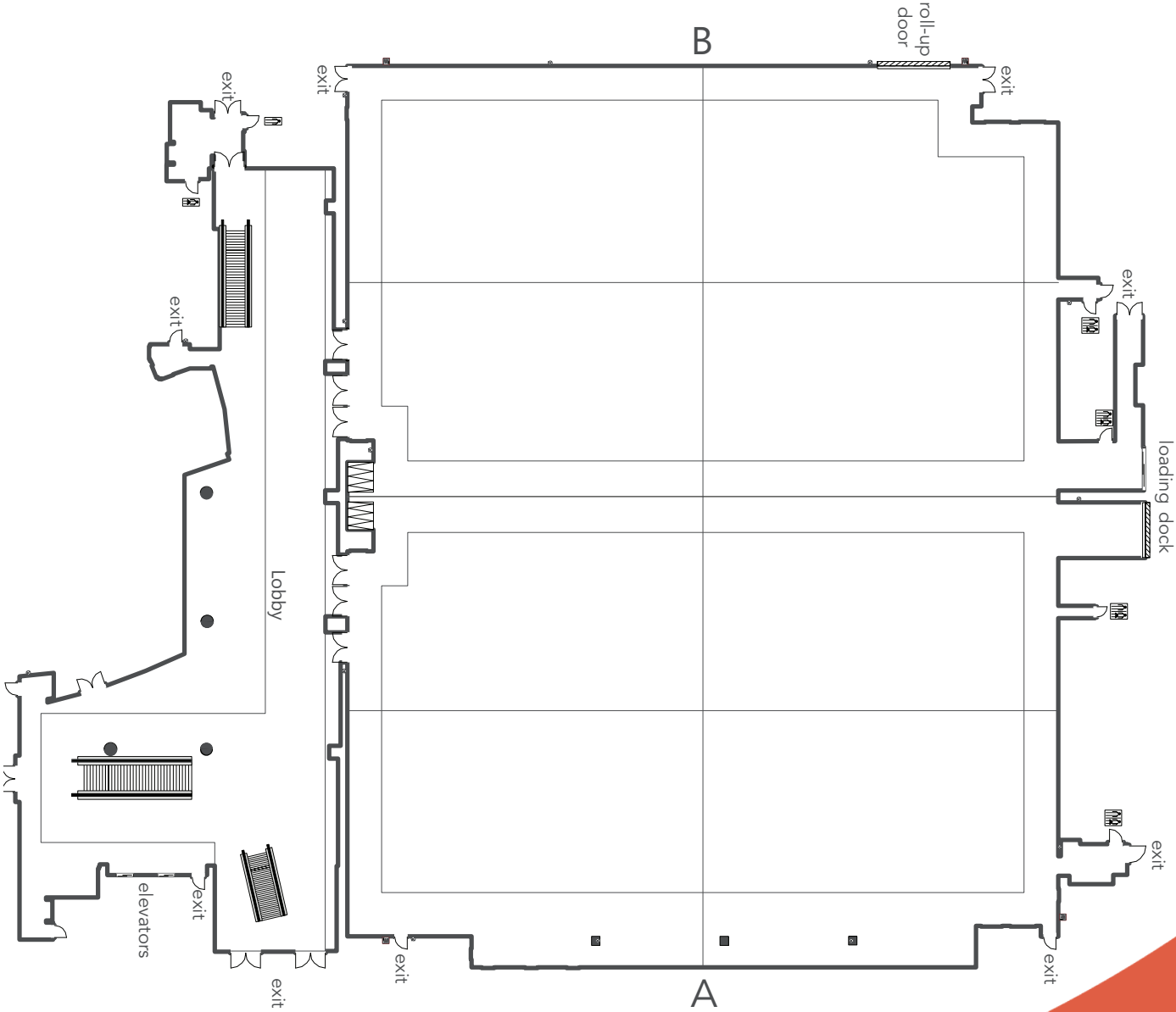


1st FLOOR

CENTER HALL AND LOBBY

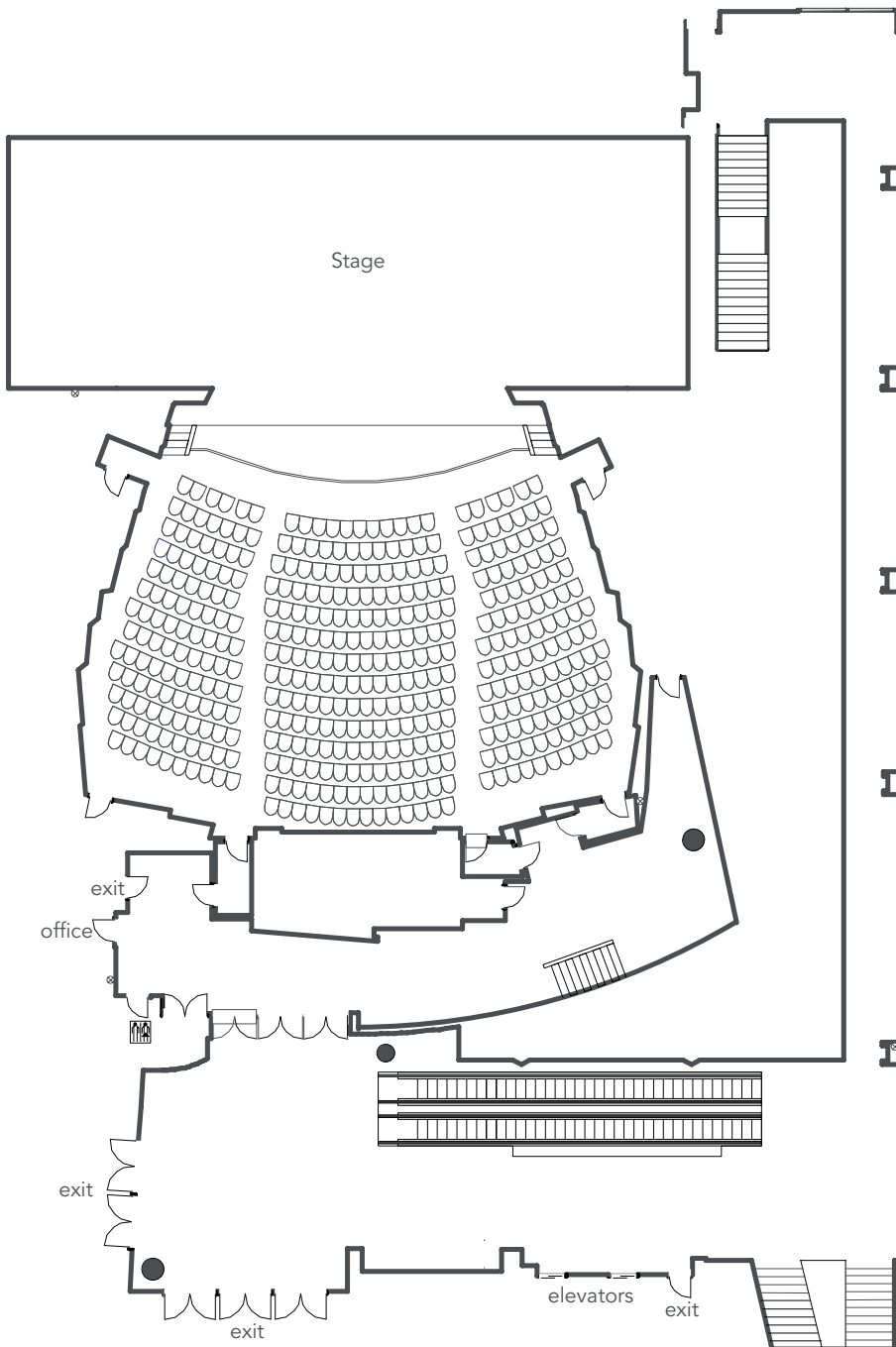
Meeting Space	Sq. Ft.	Dimensions	Rounds	Theater	Classroom	Reception	Ceiling
Center Hall A or B	18,000	166' x 100'	1,000	1,750	1,200	1,800	32'
Center Halls A and B	36,000	166' x 210'	2,000	3,500	2,400	3,600	32'
Center Hall Lobby	2,600	20' x 30'				350	75'



2nd FLOOR

THEATRE, INNER LOBBY AND OUTER LOBBY

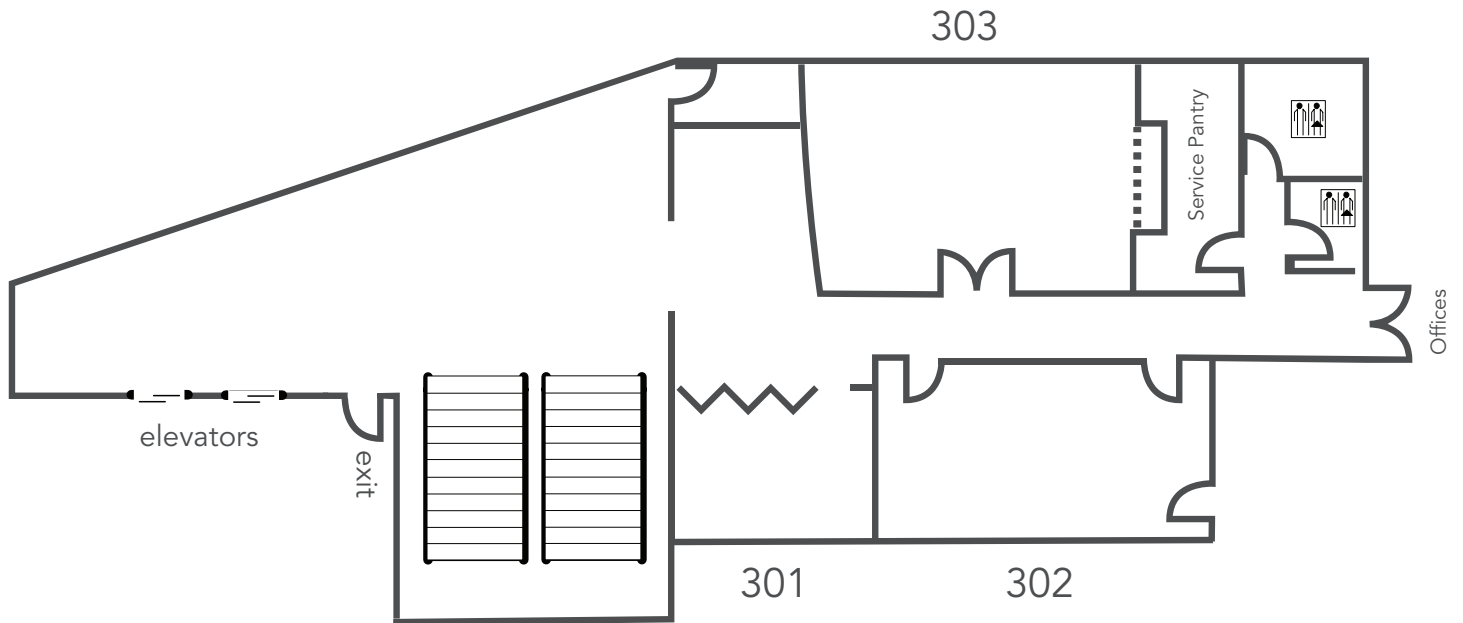
Meeting Space	Sq. Ft.	Dimensions	Rounds	Theater	Classroom	Reception	Ceiling
Theatre	3,400	40' x 36' stage		410			20'



3rd FLOOR

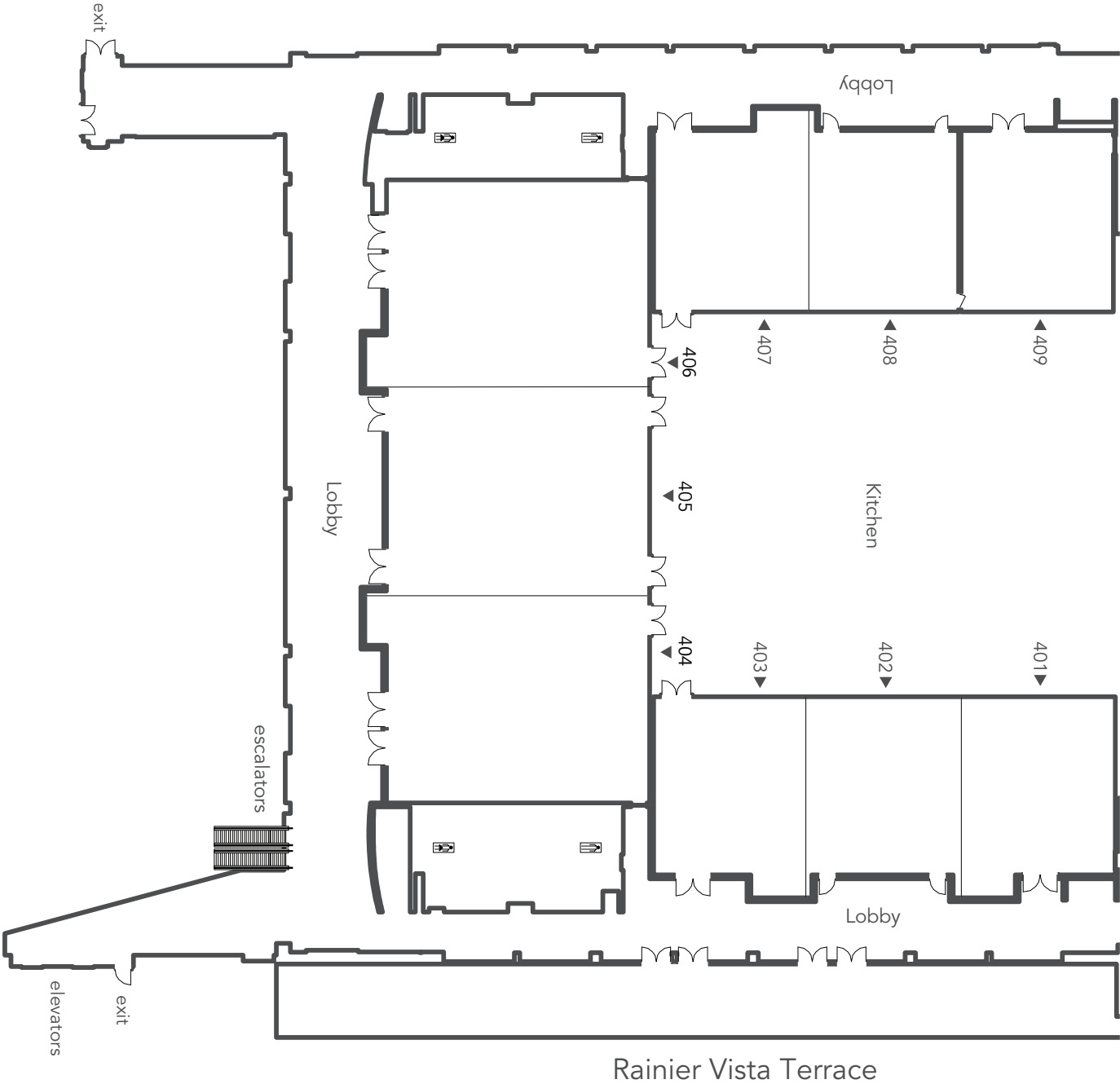
EXECUTIVE CONFERENCE ROOMS

Meeting Space	Sq. Ft.	Dimensions	Rounds	Theater	Classroom	Board Room	Ceiling
Room 303	20' x 30'	600'	40	40	24	18	8'
Room 302	17' x 30'	510'				14	8'
Room 301	14' x 20'	280'				8	8'



4th FLOOR

MEETING ROOMS, LOBBY AND TERRACE



See the following page for 4th floor dimensions and capacity.

4th FLOOR

4th FLOOR MEETING SPACE DIMENSIONS AND CAPACITY

Meeting Space	Sq. Ft.	Dimensions	Rounds	Theater	Classroom	Reception	Ceiling
Rooms 404, 405 & 406	6,000	50' x 117'	400	600	360	600	16'
Rooms 404 & 405 or Rooms 405 & 406	4,000	50' x 80'	240	400	240	400	16'
Rooms 401, 402 & 403	3,000	34' x 87'	220	300	165	250	16'
Room 404, 405 or 406	2,000	50' x 39'	120	200	120	120	16'
Rooms 401 & 402 or Rooms 402 & 403 or Rooms 407 & 408	2,000	34' x 58'	150	200	110	120	16'
Room 401, 402, 403, 407, 408 or 409	1,000	34'x29'	60	100	55	55	16'
4th Floor Lobby	2,240	14' x 160'				285	17'
Rainier Vista Terrace	2,080	13' x 160'				200	