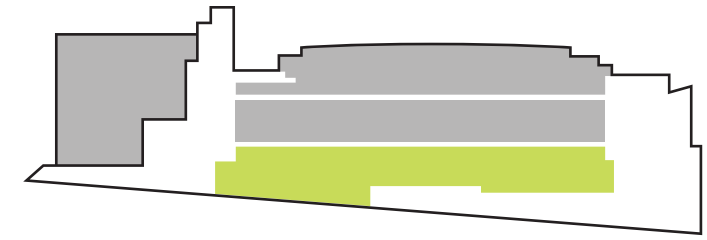
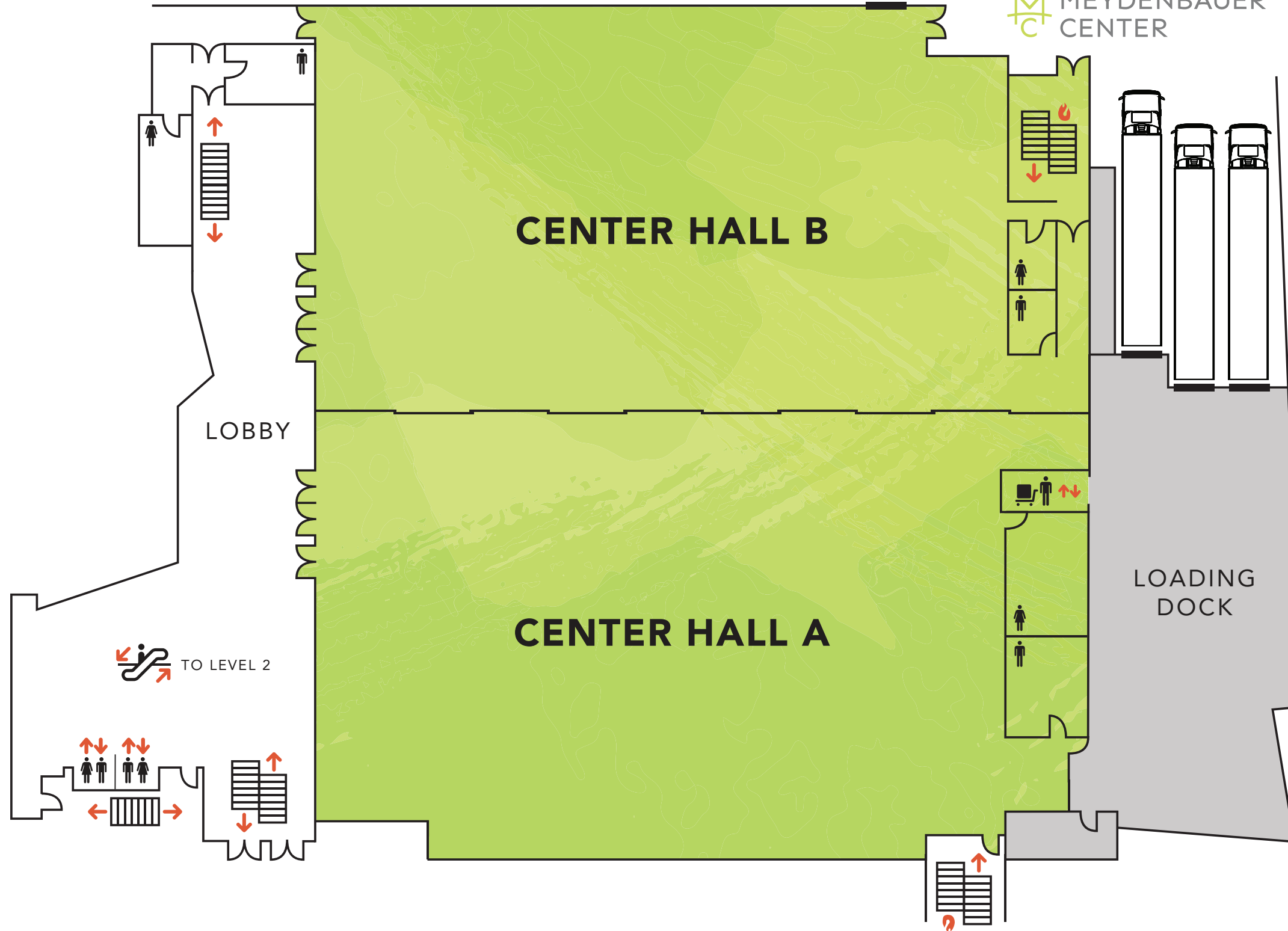


Center Hall (A & B)



M
C MEYDENBAUER
CENTER



MEYDENBAUER CENTER: FACILITIES SUMMARY



Meeting Rooms (Level 4)

- 12,000 total square feet
- Divides into nine meeting rooms
- 1,000 to 6,000 square feet per room
- Adjacent terrace provides sweeping views of the city skyline and Mt. Rainier's summit

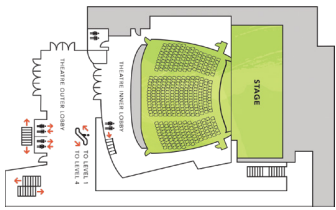


Side view, all four levels



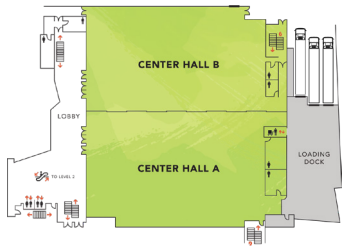
Executive Suite (Level 3)

- 3 rooms – space for 8 to 60
- 80" monitor/high-speed wired or wireless connectivity
- Private pantry/service area



Theatre (Level 2)

- 410-seat 3,400 square foot sloped-floor theatre
- Seats equipped with tablet-arms
- 40'w x 34'd x 20'h stage with an orchestra pit for up to 24 musicians
- Fully equipped theatre with professional lighting and sound systems



Center Hall (Level 1)

- 36,000 square feet, divides into two sections
- Fully carpeted
- Ceiling height is 32' with overhead steel for production rigging
- Three loading bays

Meeting Space	Dimensions	Square Footage	Ceiling Height	Booths 8'x10'	Banquet	Theater	Classroom	Reception
Center Hall A or B	166' x 100'	18,000	32'	100	1,000	1,750	1,200	1,800
Center Halls A and B	166' x 210'	36,000	32'	200	2,000	3,500	2,400	3,600
Center Hall Prefunction	20' x 30'	2,600	75'					350
401, 402, 403, 407, 408 or 409	34' x 29'	1,000	16'		60	100	55	55
401-402, 402-403, 407-408	34' x 58'	2,000	16'	12	150	200	110	120
404, 405 or 406	50' x 39'	2,000	16'		120	200	120	120
404-405 or 405-406	50' x 80'	4,000	16'	27	240	400	240	400
404-406	50' x 117'	6,000	16'	43	400	600	360	600
401-403	34' x 87'	3,000	16'	24	220	300	165	220
4th Floor Prefunction	14' x 160'	2,240	17'					285
Rainier Vista Terrace	13' x 160'	2,080						200
Theatre	40' x 36' stage	3,400	20'			410 sloped floor		

Executive Suite	Dimensions	Square Footage	Ceiling Height	Board Table	Rounds 60"	Theatre	Classroom	Reception
Room 303	20' x 30'	600'	8'	18	40	40	24	60
Room 302	17' x 30'	510'	8'	14				
Room 301	14' x 20'	280'	8'	8				

NOTE: Room capacities are reduced with the inclusion of staging, head tables, food and beverage services, audiovisual equipment, etc.