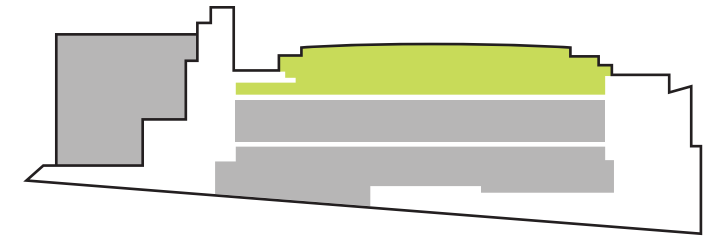


Meeting Rooms & Breakout Space



M
C MEYDENBAUER
CENTER

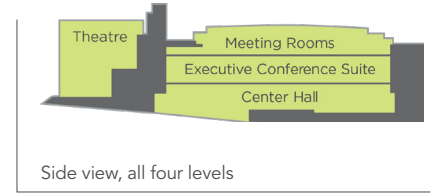


MEYDENBAUER CENTER: FACILITIES SUMMARY



Meeting Rooms (Level 4)

- 12,000 total square feet
- Divides into nine meeting rooms
- 1,000 to 6,000 square feet per room
- Adjacent terrace provides sweeping views of the city skyline and Mt. Rainier's summit

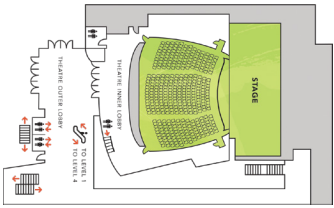


Side view, all four levels



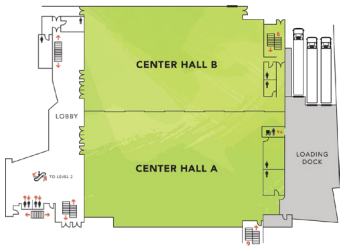
Executive Suite (Level 3)

- 3 rooms – space for 8 to 60
- 80" monitor/high-speed wired or wireless connectivity
- Private pantry/service area



Theatre (Level 2)

- 410-seat 3,400 square foot sloped-floor theatre
- Seats equipped with tablet-arms
- 40'w x 34'd x 20'h stage with an orchestra pit for up to 24 musicians
- Fully equipped theatre with professional lighting and sound systems



Center Hall (Level 1)

- 36,000 square feet, divides into two sections
- Fully carpeted
- Ceiling height is 32' with overhead steel for production rigging
- Three loading bays

Meeting Space	Dimensions	Square Footage	Ceiling Height	Booths 8'x10'	Banquet	Theater	Classroom	Reception
Center Hall A or B	166' x 100'	18,000	32'	100	1,000	1,750	1,200	1,800
Center Halls A and B	166' x 210'	36,000	32'	200	2,000	3,500	2,400	3,600
Center Hall Prefunction	20' x 30'	2,600	75'					350
401, 402, 403, 407, 408 or 409	34' x 29'	1,000	16'		60	100	55	55
401-402, 402-403, 407-408	34' x 58'	2,000	16'	12	150	200	110	120
404, 405 or 406	50' x 39'	2,000	16'		120	200	120	120
404-405 or 405-406	50' x 80'	4,000	16'	27	240	400	240	400
404-406	50' x 117'	6,000	16'	43	400	600	360	600
401-403	34' x 87'	3,000	16'	24	220	300	165	220
4th Floor Prefunction	14' x 160'	2,240	17'					285
Rainier Vista Terrace	13' x 160'	2,080						200
Theatre	40' x 36' stage	3,400	20'			410 sloped floor		

Executive Suite	Dimensions	Square Footage	Ceiling Height	Board Table	Rounds 60"	Theatre	Classroom	Reception
Room 303	20' x 30'	600'	8'	18	40	40	24	60
Room 302	17' x 30'	510'	8'	14				
Room 301	14' x 20'	280'	8'	8				

NOTE: Room capacities are reduced with the inclusion of staging, head tables, food and beverage services, audiovisual equipment, etc.

2020 - 2021 RENTAL RATES

Meydenbauer Center's rental rates are based on space used, organization type, event type, and whether catering or other services are also used. Meydenbauer Center's food and beverage rental credit can lower or eliminate room rental charges dependent on the total amount of hosted catering services ordered.

The credit is given in the amount of twenty percent (20%) of gross food and beverage receipts for hosted service rendered and will not exceed base building rental due.

The executive conference suite may be rented via the Executive Conference Package (ECP), an all-day per person fee including rent, breakfast, lunch, breaks, standard AV and internet. Please see the Package Pricing information sheet for details.

Event Type	Area	2020 Rate Per Day	2021 Rate Per Day
Convention (minimum 200 hotel rooms on peak night)	Center Hall	\$10,140	\$10,445
	Half Center Hall (A or B)	\$5,895	\$6,070
	Meeting Rooms (401-409)	\$2,855	\$2,940
	Theatre	\$2,360	\$2,430
	Executive Conference Suite	\$765	\$790
Meeting, Banquet, or Event	Center Hall	\$12,930	\$12,930
	Half Center Hall (A or B)	\$6,970	\$7,180
	Meeting Rooms (401-409)	\$3,615	\$3,725
	Executive Conference Suite	\$1,715	\$1,765

Room	Square Feet	2020 Rate Per Day	2021 Rate Per Day
401,402,403,407,408 or 409	1,000	\$700	\$720
401-402, 402-403, 407-408, 404, 405 or 406	2,000	\$1,195	\$1,230
401-403	3,000	\$1,680	\$1,730
404-405 or 405-406	4,000	\$1,965	\$2,025
404-406	6,000	\$2,505	\$2,580
Theatre	3,400	\$2,865	\$2,950
301	280	\$510	\$525
302	510	\$830	\$855
303	600	\$830	\$855

NOTE: Move-in/Move-out/Rehearsals (one half minimum base rent)

Local non-profit charitable organizations designated 501(c)3 will receive a 33% discount from the published rental rates.

Note: Rates quoted beyond 2021 could include a rate increase up to 5% per year.



Bellevue, Washington's Convention Center

meydenbauer.com | (425) 637-1020