



GREENER EVENTS START HERE

SUSTAINABILITY TOOLKIT

info@meydenbauer.com

OUR FOCUS

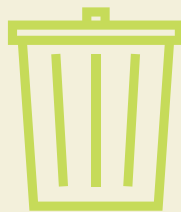
Sustainability at the heart of every event.

At Meydenbauer Center, we prioritize sustainability through energy efficiency, waste reduction & staff education. Our focus is on reducing our environmental impact by operating our facility as efficiently as possible. Through community partnership & local sourcing, we strive to reduce our carbon footprint.



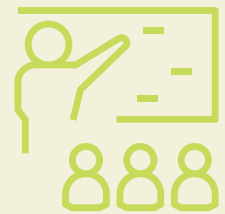
ENERGY EFFICIENCY

How can we plan amazing events with sustainable energy solutions?



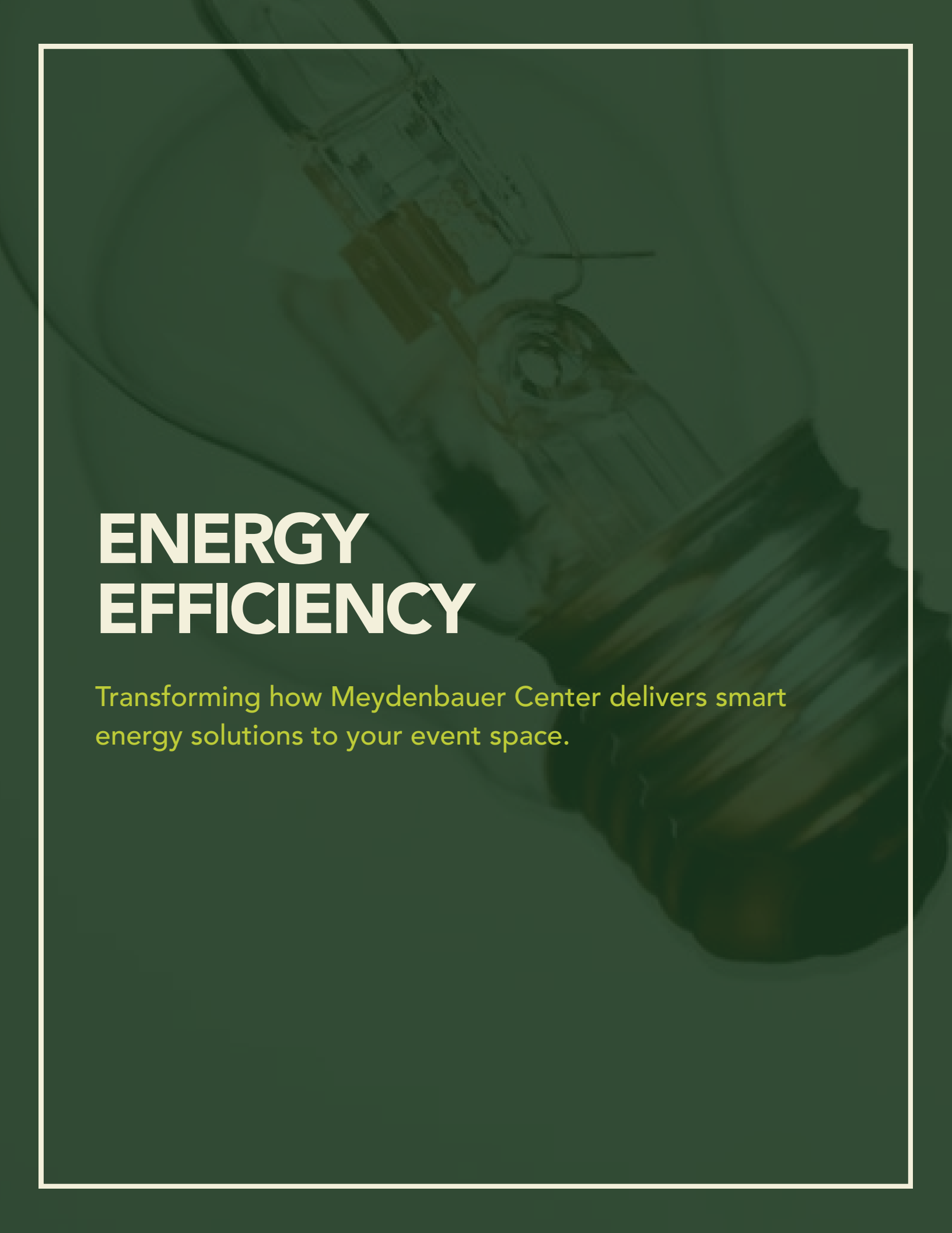
WASTE REDUCTION

How can we make recycling and composting second nature at our events?



STAFF EDUCATION

How can we build a culture of sustainability among our staff?



ENERGY EFFICIENCY

Transforming how Meydenbauer Center delivers smart energy solutions to your event space.

BUILT IN EFFICIENCY

Check out how we are improving our energy efficiency.

Capital improvements are expected to reduce our building Energy Usage Index by 20 points, representing a reduction in carbon output equivalent to 351.9 metric tons of carbon per year. This is equivalent to 13,304 trees or displacing 120,491 gallons of gasoline burned.

OUR MILESTONES

JUNE
2024

Improved HVAC efficiency by adding and adjusting roof insulation.

JULY
2024

Lowered energy consumption with LED lighting and occupancy/daylight sensors.

Reduced internal temperature fluctuations with South-facing window film.

AUG
2024

Minimized heat and air conditioning loss with an air curtain on the loading dock.

SEP
2024

Enhanced HVAC efficiency with 21 new energy-efficient water source heat pumps.

OCT
2024

Installed a new energy-efficient domestic hot water system.

NEED SOME TIPS?

Here's how to make your next event more energy efficient.

1

Talk with your AV company about their technology. Use LED lighting and energy-smart audiovisual equipment.

2

Be specific in the hours you will be occupying various spaces to ensure efficient heating and cooling in the the space.



WASTE REDUCTION

How Meydenbauer Center's waste reduction milestones help you create greener events.

WASTE REDUCTION

Meydenbauer Center has a strong recycling and composting program and diverts 78% of the waste that comes through our facility from the landfill.

OUR MILESTONES

OCT
2023

Determined we were diverting 65% of our waste from landfill through a waste audit.

DEC
2023

Revived composting with enhanced kitchen waste sorting.

JUN
2024

Added recycling for Styrofoam, plastic wrap, and pallets.

NOV
2024

Relaunched a food donation program with OSL Serves, providing 585+ pounds of food in one month to support 1,000+ community members.

DEC
2024

Reached 78% waste diversion and introduced meeting room compost bins!

JUN
2025

Introduced meeting room compost bins.



NEED SOME TIPS?

Here's how to reduce waste at your next event

1

Skip the paper – consider only distributing materials digitally.

2

Use our digital signage rather than printing signs for your event.

3

Think about swag – Look for items that are high-use that individuals might purchase otherwise.

4

Skip the single use – Consider meals that use dishware and cutlery. Opt for ceramic mugs for coffee rather than paper cups.



STAFF EDUCATION

How our team builds sustainability through education
and community involvement.

STAFF EDUCATION

At Meydenbauer Center, we firmly believe sustainable events start with our staff. We have an 11-member sustainability committee with members across all facets of our organization focused on staying on top of sustainability trends and educating our team on best practices.

QUICK TIP

HIRE SORTATION STAFF

If sustainability is a top goal for your meeting, we can provide staff to educate guests on how to appropriately sort their waste at the bins.



Our team took action with Keep Bellevue Beautiful by cleaning the Bellevue streets on Earth Day.

OUR TIMELINE

SEP
2023

Launched a cross-functional sustainability committee.

NOV
2023

Identified energy efficiency, waste reduction, and staff education as focus areas.

JAN
2024

Trained staff on waste sortation and sustainable practices.

MAR
2024

Learned about landfill impacts through a regional landfill tour.

SEP
2024

Gained insights into composting with a visit to Cedar Grove.

OCT
2024

Hosted a staff meeting focused on sustainability, encouraging new ideas for improvement.

TRANSPORTATION

Meydenbauer Center is conveniently located in downtown Bellevue with many easy and efficient ways to access the facility without use of a single occupant vehicle.

GETTING HERE



PUBLIC TRANSPORTATION

We are located within a half block of the King County Metro [Bellevue Transit Center](#) with 14 lines taking passengers to communities around King County and across the street from the Sound Transit [Bellevue Downtown Station](#), which currently connects riders from Bellevue to Redmond and will connect passengers to the airport by 2026.



BELLEVUE-BASED TRANSPORTATION

Bellevue offers the [BellHop](#), a free, 100% electric shuttle connecting visitors to hotels, attractions, and restaurants within a 6-mile radius, running daily.

Guests at select hotels, including Courtyard Marriott, Hyatt Regency, Intercontinental, and Westin Bellevue, can also enjoy [BikeHop](#), a complimentary REI bike and helmet rental program for exploring the city and nearby trails.



AIRPORT CONNECTIONS

For guests travelling in from out of town, the [Bellevue Airport Shuttle](#) offers group transportation from the airport directly to Bellevue hotels for a flat rate of \$30 plus taxes. The Bellevue Airport Shuttle runs hourly back and forth from SeaTac International Airport allowing for a lower carbon way to get into town. Group transportation can be arranged for convention groups requesting group travel.

SUSTAINABLE VENDOR LIST

Featuring eco-conscious vendors and local options to minimize your carbon footprint while supporting the community.

VENDOR LIST

ANALOG PLANT RENTALS

Analog Plant Rentals is a fantastic local vendor committed to sustainability and style. Their beautifully curated plant decor is available for rent—helping reduce event waste while adding vibrant, natural elements to any event. Most of their pots are made from recycled materials, and their sister company, Analog Floral, offers locally-sourced floral products for a fully eco-conscious design experience.

www.analogplantrentals.com

BELLDEN LIFE

Bellden Life is a locally owned business that blends beautiful products with meaningful impact. Founded by community advocate Claire, Bellden offers hand-poured soy candles and handcrafted snacks—each thoughtfully created to support a different local cause. Every purchase gives back, making these items perfect as thank-you gifts for event speakers, additions to auction packages, or tokens of appreciation that reflect your values. With Bellden, you're not just gifting—you're uplifting the community.

www.belldenlife.com

GODELTA

While this is not a local company, GoDelta makes it easy to align your branded merchandise with your sustainability goals. Their curated selection of eco-friendly swag helps reduce your environmental footprint—without sacrificing style or impact. By choosing purposeful, practical items your audience will actually use, you not only extend your brand's reach but also help keep waste out of landfills.

www.godelta.com/sustainable-swag

LOGO UNLIMITED

Analog Plant Rentals is a fantastic local vendor committed to sustainability and style. Their beautifully curated plant decor is available for rent—helping reduce event waste while adding vibrant, natural elements to any event. Most of their pots are made from recycled materials, and their sister company, Analog Floral, offers locally-sourced floral products for a fully eco-conscious design experience.

www.logounlimited.com

VENDOR LIST

MAKE A SCENE RENTALS

Make a Scene Rentals offers unique, eye-catching props, displays, and decor that bring any event to life—without the waste of single-use decorations. As a rental company, they make it easy to create memorable scenes while keeping sustainability front and center. Whether you're planning a holiday party, corporate event, or fundraising gala, Make a Scene helps you make a big impact with a lighter footprint.

www.makeascenerentals.com

MINUTEMAN PRESS PRINTING

Minuteman Press is a locally owned one-stop-shop for all your printing needs. From wayfinding signage to printed programs, their friendly staff is ready to assist. They also offer FalconBoard, which is a recyclable and biodegradable alternative to the traditional foamcore!

www.mmpbel.com